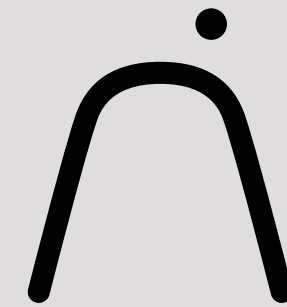




TIMELESS DESIGN
COLLECTION

AmurA



TIMELESS BEAUTY

We live thousand kinds of love every day.
But love for places is the best medicine in the world.

Franco Arminio

it is in this world made of culture, of endless traditions, of artistic presence, and continuing innovation that Amura is born. The brand of furniture hand made in Puglia, that carries the strong and unique beauty of Southern Italy.

AUTHENTIC INSPIRATION

A young company that pursues the creation of timeless design with passion and accurate attention, with the ability to combine the memory of origins with the future of design. From the careful selection of materials to the innovative design research, every step of the creation brings a lasting mark of the genuine Southern atmosphere.

AMURA





KIMONO armchair in fabric and cuoio with metal structure *by Quaglio e Simonelli.*

CONTEMPORARY (R)EVOLUTION

Our design concept aims to represent the community's future, present, and past. It is not only an answer to a need, but the attempt to transform aspiration and desires. Just as music, philosophy, and figurative art affect our modernity and our evolution as well.



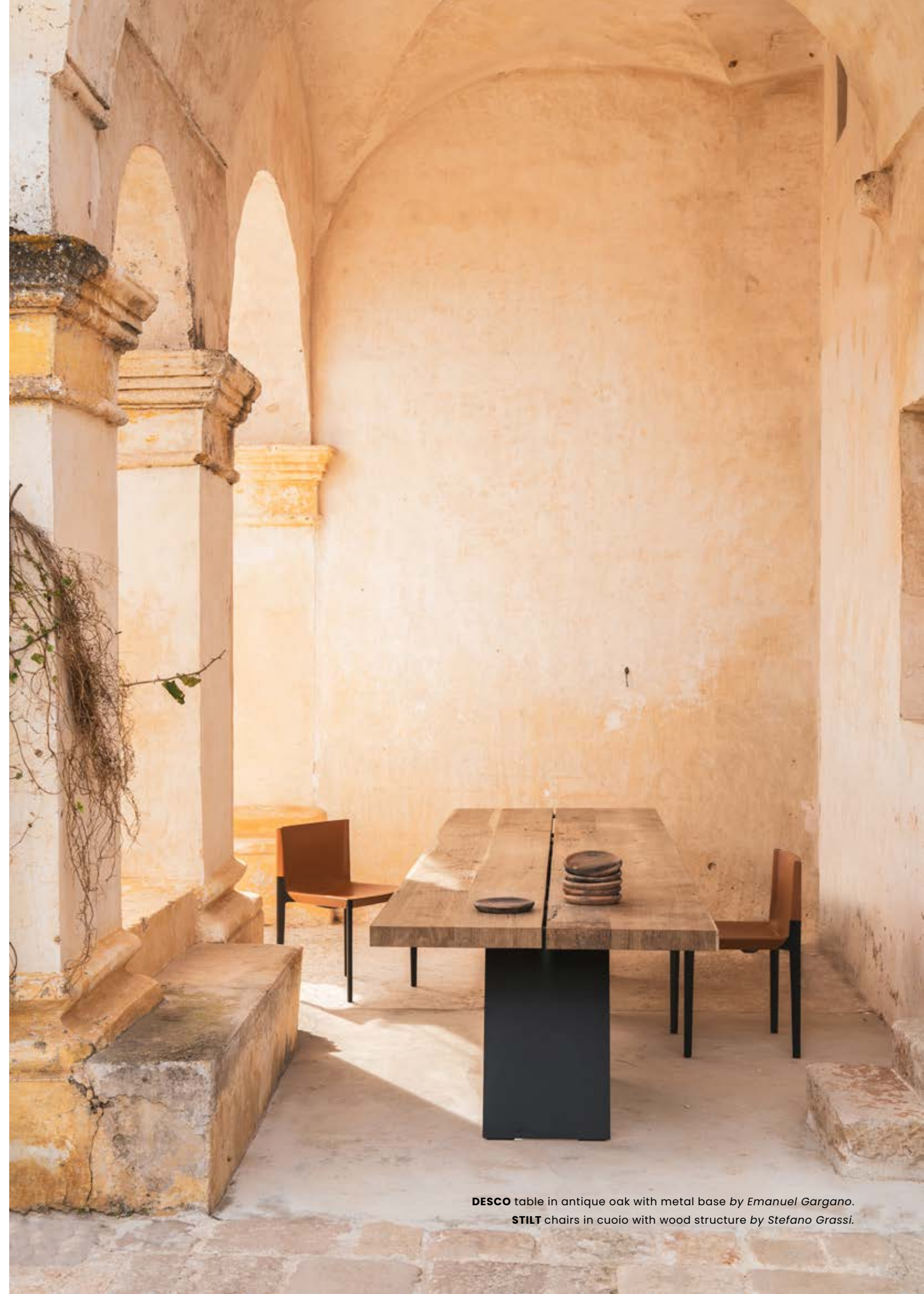


STILT chair in cuoio with wood structure *by Stefano Grassi.*

OUR ORIGINS, OUR FUTURE

Warm southern colors blend elegantly with the deep blue sky above Altamura. Walking through the maze of small stone streets, we can smell the fresh baked bread mixing with the sounds of the many artisan workshops.

It is a place with an open heart, where the land is vigorous with a sincere and authentic beauty. It is not a place of the past, but one that invites you to shift your perspective to create a new future.

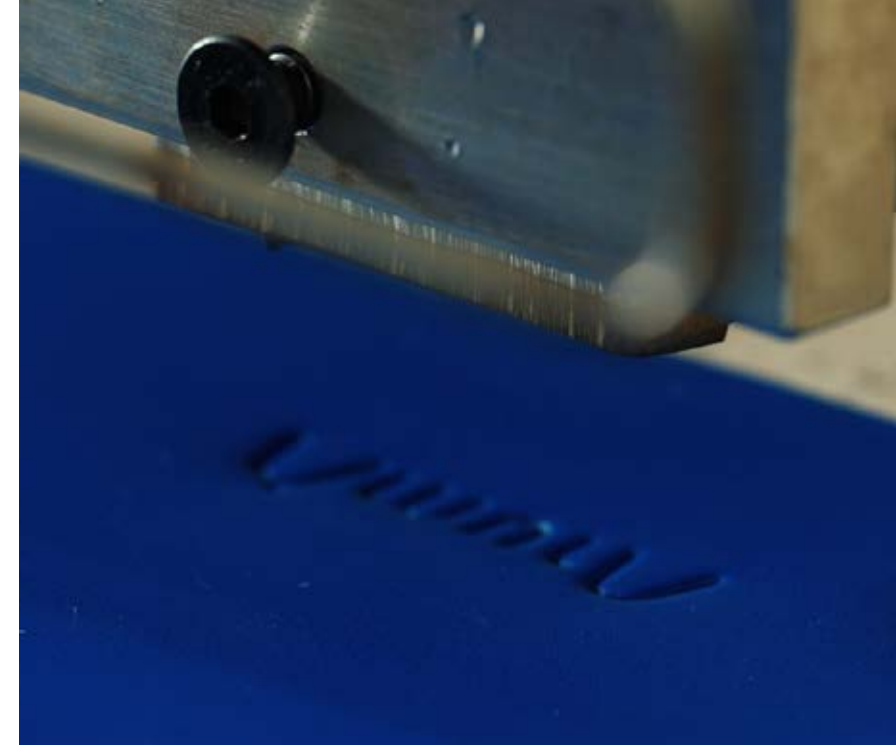


DESCO table in antique oak with metal base *by Emanuel Gargano.*

STILT chairs in cuoio with wood structure *by Stefano Grassi.*



STILT sofa in fabric and cuoio, with wood structure *by Stefano Grassi*.



LABOUR

In the world of Amura, craftsmanship has always kept its central role. It is no surprise, because the land where we were born has always been infused with artisanal wisdom overflowing with the value of experience and a culture that we continue to enhance and protect.

And this is the secret of Amura: an absolute merger between contemporary design, technology, and manufacturing quality that brings the homes all over the world not only furniture of great value, but above all, the world of values in which they are generated.





NEW INTERPRETATION OF RELAXING EXPERIENCE

It is the earth itself, where the original concept and shapes of the design elements come from: the volume, softness, flow, continuity of time, emerge naturally from ancient stone pavements.



LAPIS sofa in fabric by Emanuel Gargano, Anton Cristell.
JUNSEI coffee table in laquered metal by Studio Monti.



LAPIS sofa in velvet and coffee table in marble by *Emanuel Gargano, Anton Cristell.*

TAILOR-MADE PRODUCT

LAPIS takes different sizes and combinations according to the needs of the space: from the most classic and traditional shapes to irregular, free form combinations.

As in an atelier, each unique composition is “tailored to our customer’s needs,” every piece studied and developed by professionals.



LAPIS sofa in velvet and coffee table in marble by *Emanuel Gargano, Anton Cristell*.



Walking among the wonders of southern Italy.
Puglia, February 2015.



Emanuel Gargano, Anton Cristell thinking about a project born from talent and inspiration: **LAPIS**.



IT GROWS OUT OF THE LAND

Lapis is a living organism endlessly transforming, it is voluminous in any space, a piece emerging from archaic cobblestones.



LAPIS corner sofa in fabric and **PARERE** bookcase in laquered metal and wood by Emanuel Gargano, Anton Cristell.
TAU coffee table in antique oak and marble by Emanuel Gargano.

PARERE bookcase in laquered metal and wood by *Emanuel Gargano, Anton Cristell.*

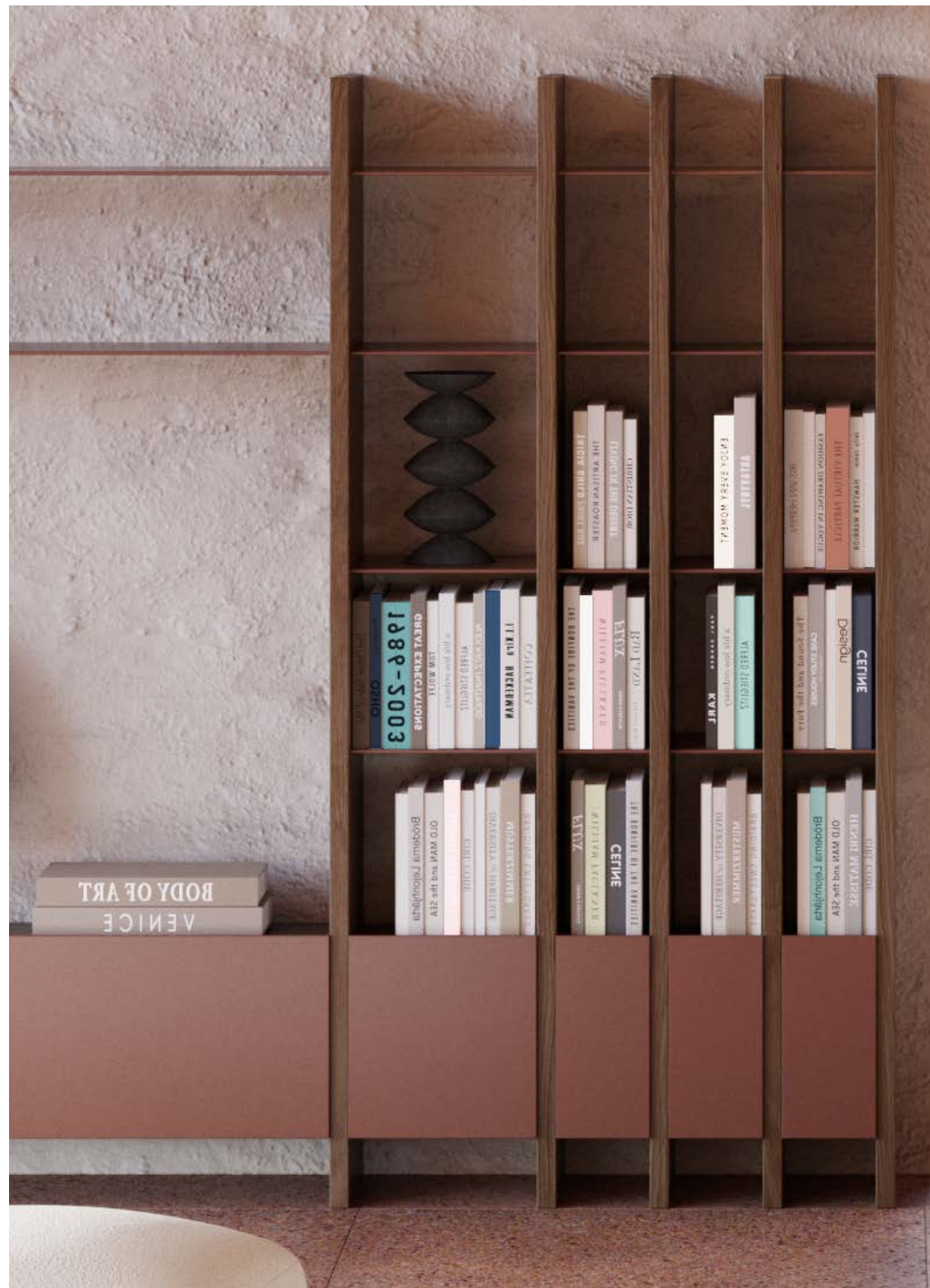


EXPRESS YOUR VISION OF SPACE

Parere is a bookcase the allows your imagination to travel, with the possibility to customize the interior design of any environment. A sort of "accordion" with adaptable dimensions for a variety of needs.

PARERE *BOOKCASE*

INFINITY SYSTEM



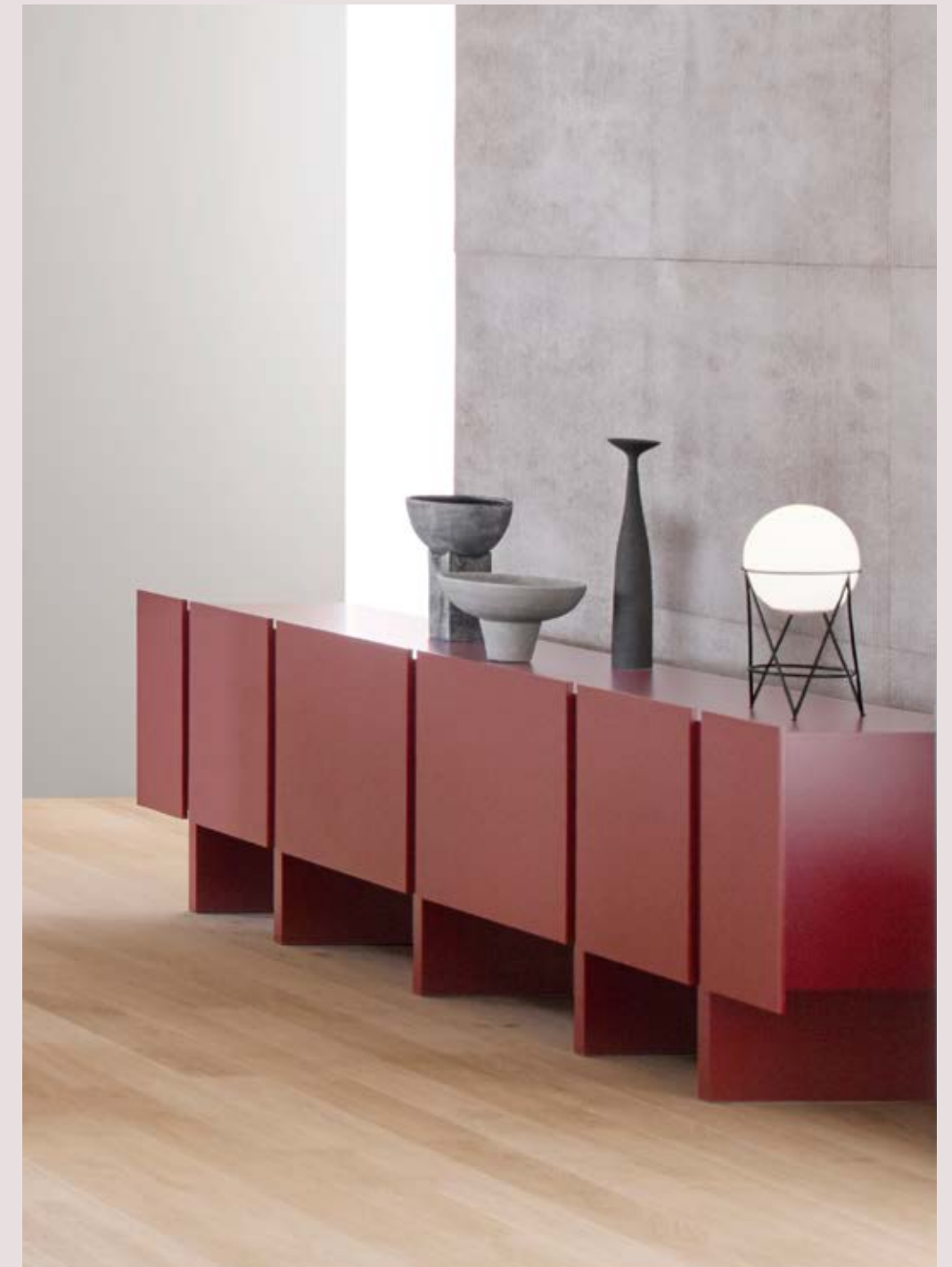
PARERE bookcase in laquered metal and wood with cuoio doors by *Emanuel Gargano, Anton Cristell.*

LAPIS sofa in fabric and coffe table in marble by *Emanuel Gargano, Anton Cristell.*

MILLEFOGLIE coffee table in laquered wood by *Emanuel Gargano.*

EASE armchair in cuoio by *Gareth Neal.*

PARERE sideboard in laquered wood with cuoio doors by *Emanuel Gargano, Anton Cristell.*



PARERE *SIDEBOARD*

INFINITY SYSTEM

PARADIGM OF MADE IN ITALY IN THE WORLD

Amura offers excellent quality products from materials to design interpreted as a perfect synthesis of form, function, and comfort, but above all handcrafted manufacturing of every element fused with advanced technology. Premises that guarantee recognition throughout the world.



LAPIS bed in fabric by *Emanuel Gargano, Anton Cristell.*



SOFT SHAPE

The iconic image of the large loaves of bread, an authentic local cult favorite, becomes a source of inspiration for a line of upholstery with generous, soft shapes that can be made in all possible configurations.



PANIS sofa in leather and **SETACCI** coffee table in dark oak, with laquered metal top by *E.Gargano, A.Cristelli, E.Furin, R.Copeta*.
MEDEA lounge chair in fabric, with swivel metal base by *Amuralab*.



PANIS armchair in leather by E.Gargano, A.Cristell, E.Furin, R.Copeta.



NATURAL IMPERFECTIONS

The natural beauty marks displayed over time on materials such as leather, cuoio, and wood, are prized by collectors for their uniqueness. The changes of a given piece are a natural and poetic reminder that nature is mutable.

For Amura the beauty of objects is how different they are from us, how they stand still and steady in the everchanging world.

Leather 100% cow-hide, finished in Italy by the best italian tanneries, do not contain any substance dangerous to man or environment.





SETACCI coffee table in natural oak, with laquered metal top
by E.Gargano, A.Cristell, E.Furin, R.Copeta.



SENSES

Exploring the senses means going beyond what is purely visual. If the sight is the first form of knowledge with any object, secondly, there is the touch.

Medea, thanks to voluptuous curves, has the task of wrapping and ensuring comfort, without sacrificing the obvious aesthetic value.



JUNSEI coffee table in laquered metal by Studio Monti.
MEDEA lounge chair in fabric, with swivel metal base by Amuralab.



PANIS sofa in fabric by *E.Gargano, A.Cristell, E.Furin, R.Copeta*.
HOURLASS coffee table in marble and laquered metal by *Amuralab*.

MEDEA lounge chair in fabric, with swivel metal base and **HOURLASS** coffee table in marble by *Amuralab*.
QUATTROPIETRE coffee table in marble Calacatta Gold, with laquered wood top by *Emanuel Gargano*.

PANIS sofa in fabric by *E.Gargano, A.Cristell, E.Furin, R.Copeta*.



ALWAYS CURRENT

Quattropietre represents the so-called "golden ratio" of classic architectural tradition, mathematically balanced creating an equilibrium of proportion. The creative process is thus born out of a graceful consideration for timeless and still always current.

QUATTROPIETRE coffee table in laquered wood, carrara marble and glass top by *Emanuel Gargano*.





PANIS sofa and pouf in fabric by *E.Gargano, A.Cristell, E.Furin, R.Copeta*.

PANIS armchair in leather by *E.Gargano, A.Cristell, E.Furin, R.Copeta*.
FRAME coffee table in laquered metal by *Studio Monti*.



PALMO chaise lounge in fabric by *Emanuel Gargano*.
JUNSEI coffee table in laquered metal by *Studio Monti*.



PALMO sofa composition with chaise lounge in fabric and daybed in leather by *Emanuel Gargano*.
JUNSEI coffee table in laquered metal by *Studio Monti*.

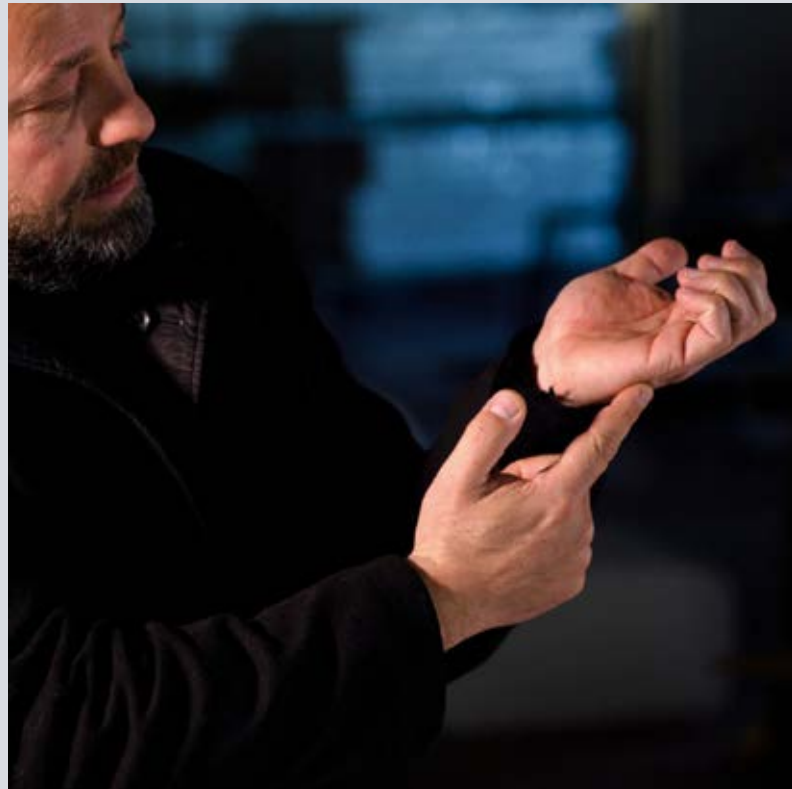
EMOTION AMPLIFIERS

Palmo, a more complex sofa, with a deeper interpretation of function, beginning with the enveloping softness of the padding and folds in the covering, wrapping itself, imagining the concept of "Welcome".
 A reference to the concept of, "You are welcome here", and welcoming people into the intimacy of one's own home.



HOSPITALITY

Watching closely the new proposal from Amura, it is evident in its design, in the enveloping softness of its upholstery and in the folds of the coverage, the hint to a hand that holds something, wrapping up on itself, in an explicit connection to the concept of "hospitality".



Emanuel Gargano designing **PALMO**.



PALMO daybed in leather by Emanuel Gargano.
JUNSEI coffee table in laquered metal by Studio Monti.



PALMO sofa in fabric and coffee table in cedar by *Emanuel Gargano*.



TIMELESS BEAUTY

It has four modular elements, in which the design can become several compositions. "Palmo" can take different sizes and combinations according to the needs of the space: from the most classic and traditional shapes to the irregular and unconventional.



DO NATURAL IMPERFECTIONS MAKE GREAT DESIGNS MORE BEAUTIFUL?

PALMO sofa in leather and coffee table in cedar by *Emanuel Gargano*.
HOURLASS coffee table in marble and laquered metal by *Amuralab*.



PALMO sofa in fabric by *Emanuel Gargano*.

ARTISAN WISDOM

Natural materials such as cuoio and wood are shaped with Artisanal skills and wisdom, with superb attention to detail giving life to truly unique pieces.

Ease. Bold personality, innovative design. The star of any living room with its solid oak structure, available in two color variants, natural or dark. It is an armchair with a distinctive and comfortable presence. The suspensions, seat and back in cuoio leather, give timeless refinement. The perfect companion for moments of relaxation with family.



EASE armchair in cuoio by Gareth Neal.



EASE armchair in cuoio by *Gareth Neal*.



GEOMETRY AND PRECISION

In Eresia volumes alternate in a balanced play of proportions. Cubes and parallelepipeds are spaced out with openings in a playful succession of “empty” and “full”.

ERESIA bookcase in laquered metal by *Emanuel Gargano*.



MODULAR DESIGN



Three dimensional modular and sectional, Eresia fits perfectly in any environment, from the office to the living area: a piece of furniture of considered rationale that can also be used to separate two different environments in the home.

ERESIA bookcase in laquered metal with optional cuoio doors by *Emanuel Gargano*.



CAKE OF PUFF PASTRY

Millefoglie table consists of overlapping levels that create an elegant play of volumes in perfect proportion in the space. Lightness and strength fuse together in Millefoglie claiming the central role in any environment in which it is placed. A polished design element performing the dual function of table top and original bookcase open on four sides.



MILLEFOGLIE coffee table in wood by *Emanuel Gargano*.

ERESIA bookcase in laquered metal with cuoio doors by *Emanuel Gargano*.

PLAY OF CONNECTIONS

Thanks to the smart play of couplings and combinations, Davis renews the living room by achieving volume and geometry. Thus, Davis adapts itself to the most diverse contexts, with its wide range of coverage and choice of combinations.

Amplifying the versatility of the sofa system while simultaneously radiating warmth and a sense of peace.

DAVIS sofa in fabric *by Amuralab.*

MILLEFOGLIE coffee table in laquered wood *by Emanuel Gargano.*



Antique oak certified of Italian provenience and age between 80 and 350 years.

TIMELESS DESIGN

Desco made in multiply with a 1 cm veneer of antique reclaimed oak, aged between 80 and 350 years, left in a raw state, ancient, where veins, cracks, knots and imperfections become the specific and characterizing feature of this table.

DESCO table in antique oak and bench in leather by *Emanuel Gargano*.



STILT chairs in cuoio with wood structure *by Stefano Grassi.*



ESSENTIAL LINES

Its solid wood structure reminds the ancient homes' architecture and inspires its own name, while it supports the backrest and seat in cuoio. The minimalist design does not hide the

meticulous research and the attention to detail that is visible from the refined cuoio sections and from the premium quality manufacturing. With an embracing timeless character.



DESCO table in antique oak *by Emanuel Gargano.*
STILT chairs in cuoio with wood structure *by Stefano Grassi.*



BALANCED SHAPES

Its solid wood structure resembles the architecture of ancient homes but inspires its own purpose, while it supports a marble or wood top.



STILT table in marble and chair in cuoio by *Stefano Grassi*.



PRODUCTS DESIGNED
TO LAST OVER TIME.

STILT chair in cuoio by *Stefano Grassi*.
EXILIS table in marble by *Amuralab*.



STILT armchair in fabric and cuoio, with wood structure *by Stefano Grassi*.

STILT coffee table set in wood with marble or cuoio top *by Stefano Grassi*.



METICULOUS RESEARCH

The structure supporting the soft padding of backrests, seats, and armrests. The minimalist design combined with meticulous research and the attention to detail visible from the refined cuoio sections, and from the premium quality

manufacturing. Soft, wide, spacious, the STILT sofa is a system embracing various timeless versions by its designer Stefano Grassi. It's unique character makes it the absolute star of any relaxing dedicated setting.



STILT sofa and armchair in fabric and cuoio, with wood structure *by Stefano Grassi.*

STILT coffee table set in wood with marble or cuoio top *by Stefano Grassi.*

ERESIA bookcase in laquered metal with cuoio doors *by Emanuel Gargano.*



Stefano Grassi seating on his **STILT** sofa in our
Amura flagshipe store, in Milan.

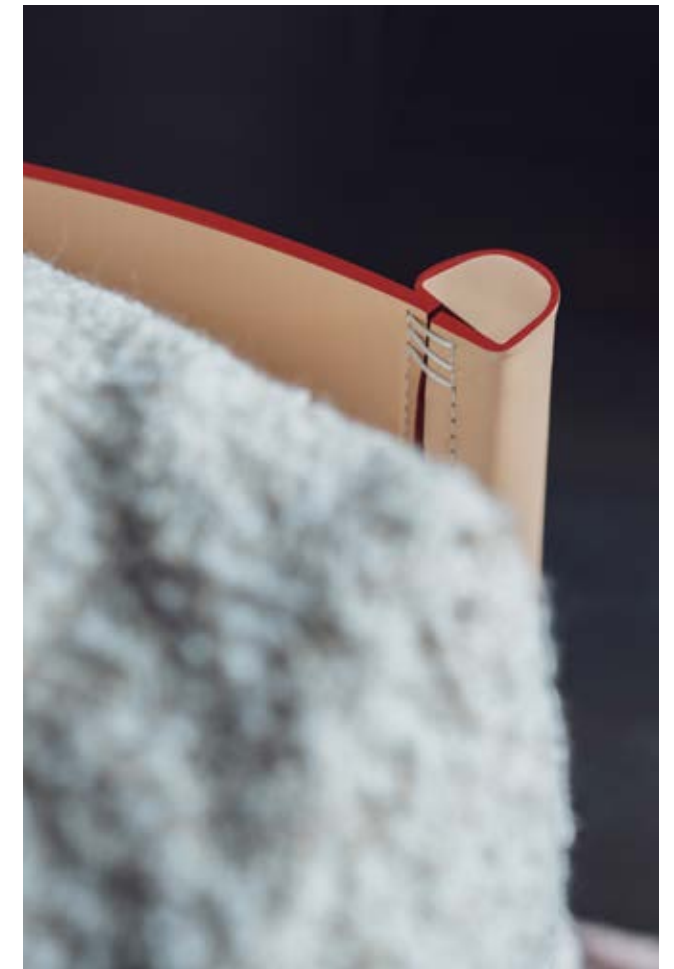


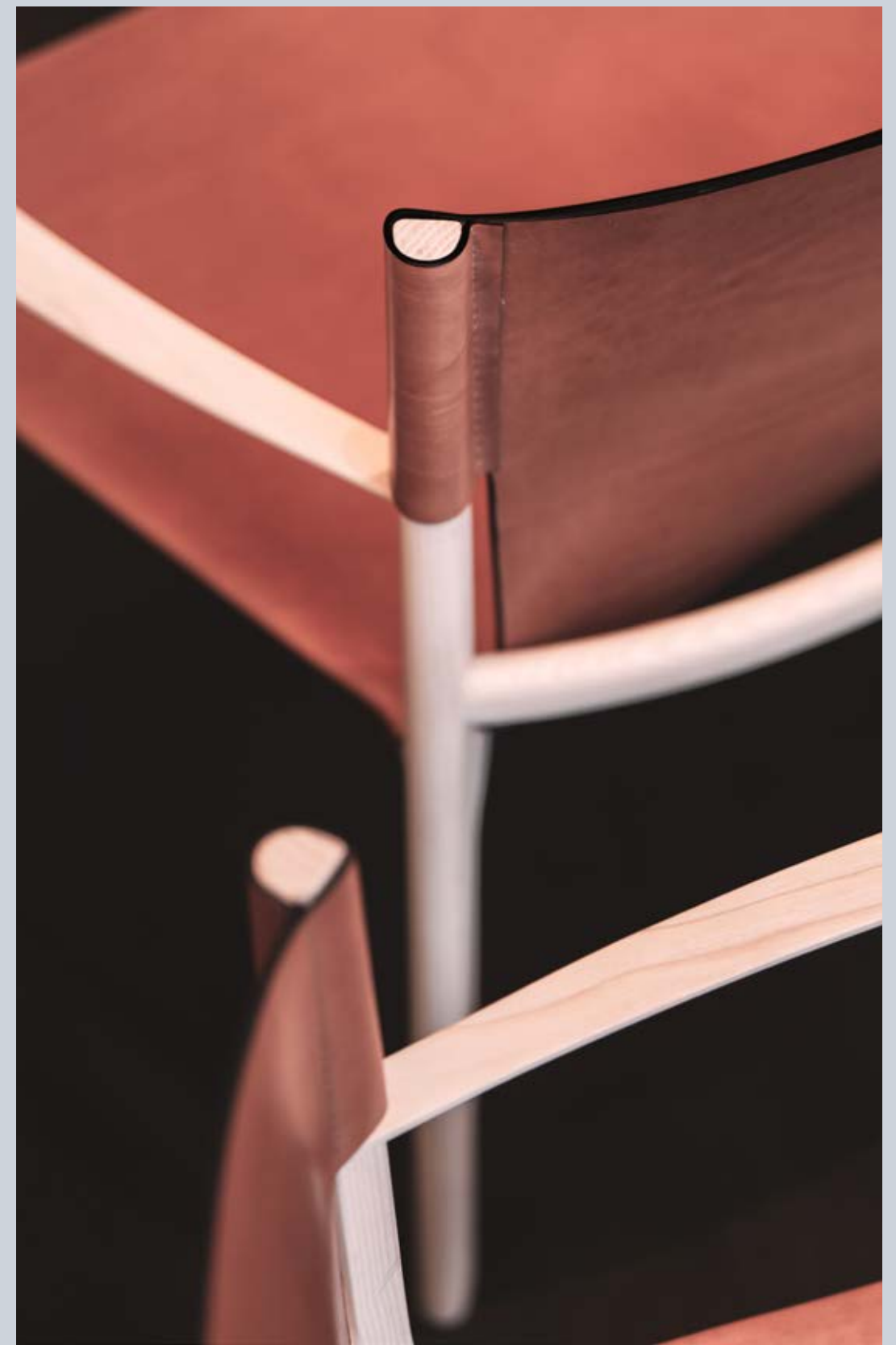
STILT sofa in fabric and cuoio,
with wood structure by *Stefano Grassi*.



MINIMALIST DESIGN DOES NOT HIDE THE METICULOUS RESEARCH.

Wrinkles, scars, porosity, color shades
and different softnesses.
Nature is an imperfect process,
changing continuously. Just like us.





STILT armchair in cuoio by *Stefano Grassi*.



STILT coffee table in wood with cuoio top *by Stefano Grassi.*

STILT armchair in fabric and cuoio,
with wood structure *by Stefano Grassi.*



CRAFTED WITH PASSION

In an increasingly interconnected world, it is not enough to create functional spaces: our mission is to develop interiors that raise our senses and generate true and real emotions. Stilt is the synthesis of the essential points of Amura:

an absolute fusion between design, technology and production quality, which brings into homes all over the world not only furniture of great value, but also and above all the universe of values in which they are generated.



CHOICE OF MATERIALS

Amura has a deep respect for human evolution and the conservation of the planet. It believes that premium quality and sustainability go hand in hand. Amura creates products designed to last over time, sustainable solutions, without compromising on quality.

Cuoio processing has the privilege of still being an artisanal process, at the same time we prefer vegetable tanned cuoio of which you can appreciate the small natural markings and grains, its unmistakable scent and its shades of color.



Working on **VIENNA** chair in cuoio: *natural crust drum dyed, cowhide with firm and flexible tanning, certified from the "Genuine Italian Vegetable Tanned Leather Consortium".*



VIENNA chair in cuoio by Quaglio & Simonelli.

SOFT DETAIL

Vienna reinterprets the classic tubular metal chairs.

The leather treatment enriches it with precious, functional and aesthetic details at the same time, that reminds of the leather goods universe. A belt supports the backrest, attaching to the armrests, while a soft detail is drawn by the leather that falls on the front of the seat, allowing you to hide the reinforcing cross bar.





Manuela Simonelli and Andrea Quaglio in our *Amura* flagshipe store, in Milan.



EXILIS table in marble with metal base by *Amuralab*.



VIENNA chair in cuoio by *Quaglio & Simonelli*.

LIGHTNESS AND RELIABILITY

The simplicity of intersecting lines creating minimal countertops, with choice materials in contrast with one other: a metal plate for the base and a marble or wood for the top.

VIENNA chair in cuoio by *Quaglio & Simonelli*.
EXILIS table in laquered wood with metal base by *Amuralab*.

FRAGILITY AND STRENGTH

Exilis is a collection of tables with strong personality and dimension. With numerous finishes and materials to choose from, their versatility is fitting in many diverse environments.



GREAT VERSATILITY

"The leather robe, stretched on the ground, like the long sleeves of a kimono".

Kimono is an elegant armchair made up of two elements: a tubular metal structure and a leather cover. The Kimono original personality lies in the essential design, in the cover craftsmanship and in the charm of a handmade product.



The tubular metal draws the structure, the cuoio dresses it, hiding some parts and showing others: defines the seat and the back, rests on the armrests and falls, stretched on the ground, like the long sleeves of a kimono.

KIMONO armchair in cuoio and fabric by Quaglio e Simonelli.

JUNSEI coffee table in laquered metal by Studio Monti.





NOA armchair in fabric by *Stefano Bigi*.



LIKE A PETAL

It is the softness that characterizes NOA, so full and flourishing to recall the very concept of comfort.

The curvy lines of the ergonomic backrest are soft, seemingly delicate like a petal, actually solid shell capable of welcoming the important dimensions of the seat and giving stability to the entire structure.



BLOOMS LIKE A FLESHY FLOWER.

What takes shape in NOA, it is a game of joints and volumes, of voids and solids, which translates into an irresistible invitation to sit. With a strong personality It is able to adapt to any type of environment, from the living room to the bedroom, to the lounge.



NOA armchair in fabric and leather by *Stefano Bigi*.



Stefano Bigi seating on his **NOA** armchair in our *Amura flagshipe store, in Milan*.

Amura big **coverage selection** in our *flagship store*, in *Milan*.

TOUCH OF COLOUR

Whatever your desired expression, Brooklyn sofa designs can reflect the sentiment with numerous fabric, leather and cuoio colors combined with metal laquered color base options.

BROOKLYN armchair in velvet and cuoio with metal base by *Stefano Bigi*.





BROOKLYN sofa and armchair in velvet and cuoio with metal base *by Stefano Bigi.*
PARERE bookcase in wood and laquered metal *by Emanuel Gargano, Anton Cristell.*

EXCITING DESIGN

The personality of the Brooklyn seats stems from the combination of innovative materials and evocative retro lines that resemble the armchairs of old cinemas or Off-Broadway theatres. The frame is the support structure, and it is painted entirely in aluminum, defined by thin feet,

giving the sofa an elegant lightness; the cuoio, leather or fabric shells are of great impact, both lateral and rear, with slightly rounded lines that welcome and embrace with soft cushions covered in fabric or leather. The result is a uniquely comfortable seating system with an exciting design.



BROOKLYN sofa and armchair in velvet and cuoio with metal base *by Stefano Bigi.*
HOURLASS coffee table in marble and laquered metal *by Amuralab.*

VANITY detail console in wood by *Stefano Bigi*.

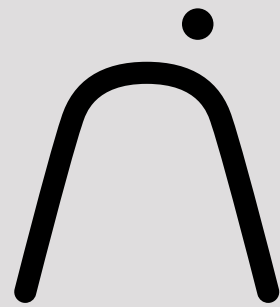


CURVACEOUS AND STRONG

In Vanity, strength and curves meet in perfect balance, the lines never yielding to excess: the support surface is gracefully polished and smooth; the legs delicate, particularly feminine in nature.

At the same time rigorous and suggestive, it is perfect both as a dressing table and as a desk.





PRODUCTS

SOFAS

LAPIS

design by *Emanuel Gargano, Anton Cristell.*



BROOKLYN

design by *Stefano Bigi.*



STILT SOFA

design by *Stefano Grassi.*



PALMO

design by *Emanuel Gargano.*



PANIS SOFA

design by *E.Gargano, A.Cristell, E.Furin, R.Copeta.*



DAVIS

design by *Amuralab.*



BED

LAPIS BED

design by Emanuel Gargano, Anton Cristell.



KIMONO

design by Quaglio e Simonelli.



ARMCHAIRS

MEDEA

design by Amuralab.



CHAIRS & BENCH

VIENNA

design by Quaglio e Simonelli.



STILT CHAIR

design by Stefano Grassi.



NOA

design by Stefano Bigi.



BROOKLYN

design by Stefano Bigi



DESCO BENCH

design by Emanuel Gargano, Anton Cristell.



PANIS

design by E.Gargano, A.Cristell, E.Furin, R.Copeta.



EASE

design by Gareth Neal.



DESCO

design by Emanuel Gargano, Anton Cristell.



EXILIS

design by Amuralab.



LAPIS

design by Emanuel Gargano, Anton Cristell.



SETACCI

design by Emanuel Gargano.



STILT TABLE

design by Stefano Grassi.



MILLEFOGLIE

design by Emanuel Gargano.



QUATTROPIETRE

design by Emanuel Gargano.



STILT

design by Stefano Grassi.



JUNSEI

design by Studio Monti.



COFFEE TABLES

TAU

design by Emanuel Gargano.



HOURLASS

design by Amuralab.



PARERE

design by Emanuel Gargano, Anton Cristell.



ERESIA

design by Emanuel Gargano.



FRAME

design by Studio Monti.



CONSOLE TABLES

VANITY

design by Stefano Bigi.



PARERE

design by Emanuel Gargano, Anton Cristell.



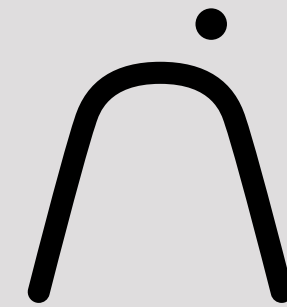
ERESIA

design by Emanuel Gargano.



BOOKCASES

SIDEBOARDS



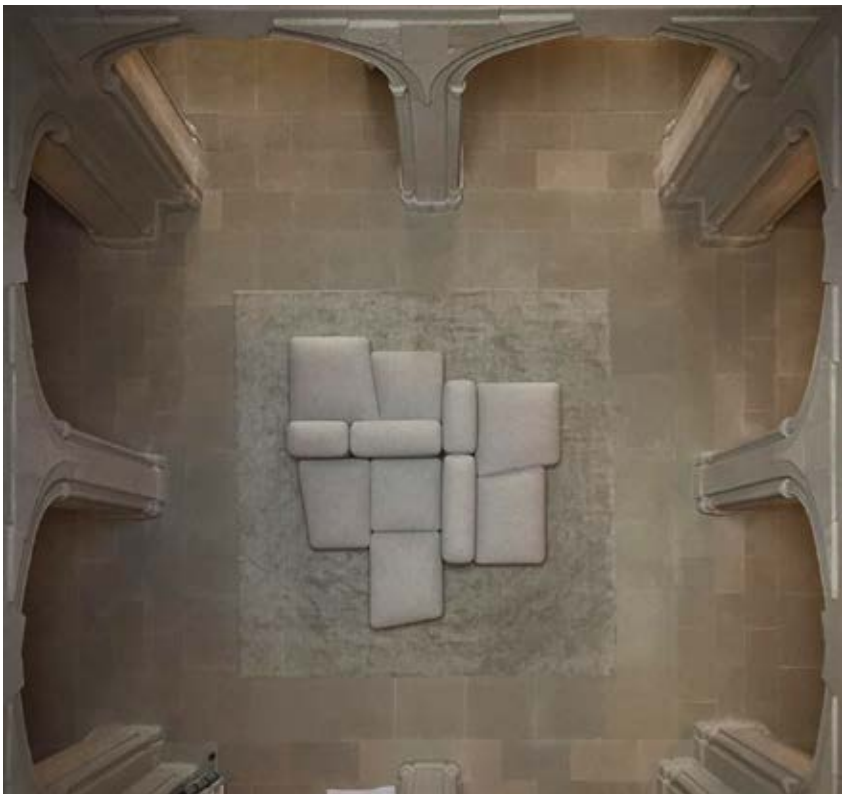
AMURA FROM THE WORLD

Projects, collaborations, case studies.

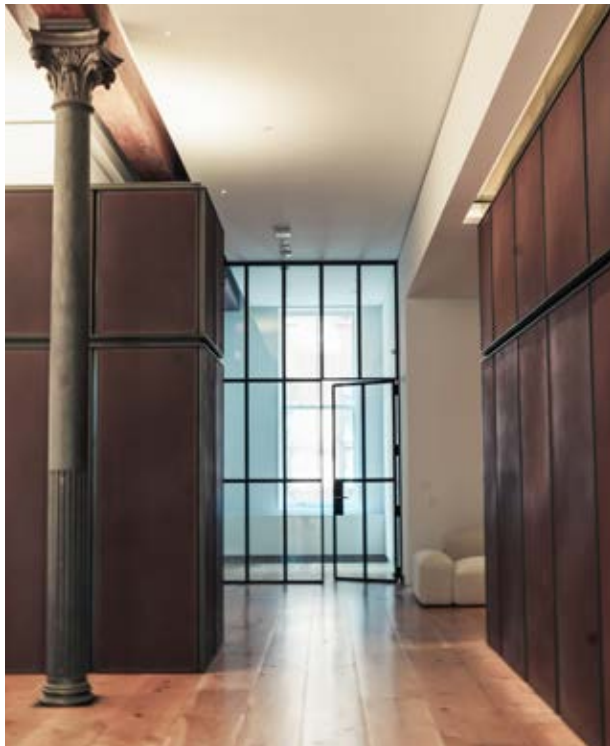
In an increasingly interconnected world, it is no longer enough to create functional spaces: our mission is to develop interiors that enhance our senses and generate real emotions.



LAPIS by Emanuel Gargano, Anton Cristell.
Private residence, Swiss.



LAPIS by E. Gargano, A. Cristell.
NOA by Stefano Bigi.
HOUREGLASS by Amuralab.
JUNSEI by Monti Studio.
Saipem Headquarter, Milano - Italy.



LAPIS by E. Gargano, A. Cristell.
Private residence, Soho - NYC.





Salone del mobile, 2024 events during Fuorisalone.
Amura Flagship store, Milan - Italy.



PANIS by E.Gargano, A.Cristell, E.Furin, R.Copeta.
Superblue Museum, Miami - Florida.

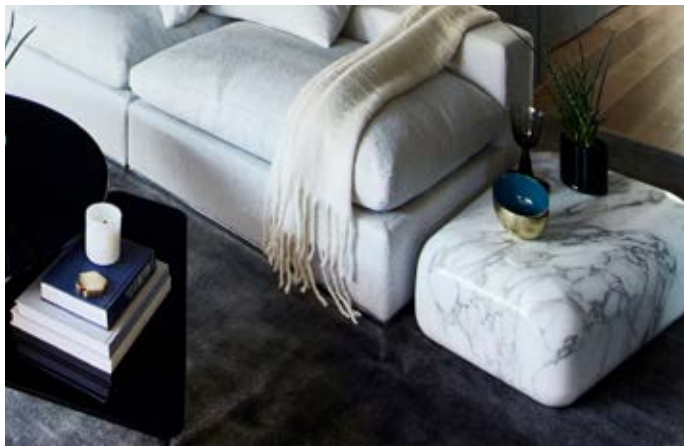


Amura in the world.
Amura Flagship store, NYC.



EASE by Gareth Neal.
Hub of culture and tradition, Vazisubani - Georgia.





LAPIS by Emanuel Gargano, Anton Cristell.
Ippolita Flagship store, Madison Avenue – NYC.

LAPIS by E. Gargano, A. Cristell.
Arman Safavi atelier, Téhéran – Iran.



LAPIS coffee table by E. Gargano, A. Cristell.
Private residence, Soho – NYC.



LAPIS by E. Gargano, A. Cristell.
Rayo cocktail bar, Mexico City – Mexico.



COACH by Jean-Marie Massaud
Cooley Office, project by Evensonbest – NYC.





BROOKLYN by Stefano Bigi.
White Rabbit Restaurant, Moscow – Russia.



LAPIS by E. Gargano, A. Cristell.
Private residence, Soho – NYC.

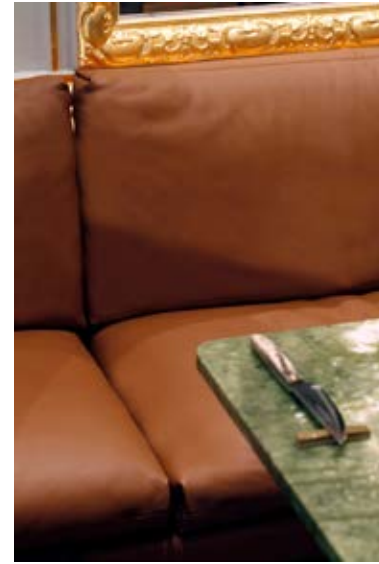


LAPIS by Emanuel Gargano, Anton Cristell.
Hotel Dimora del Monaco, Matera– Italy.





DAVIS by Amuralab.
Private residence, Gravina – Italy.



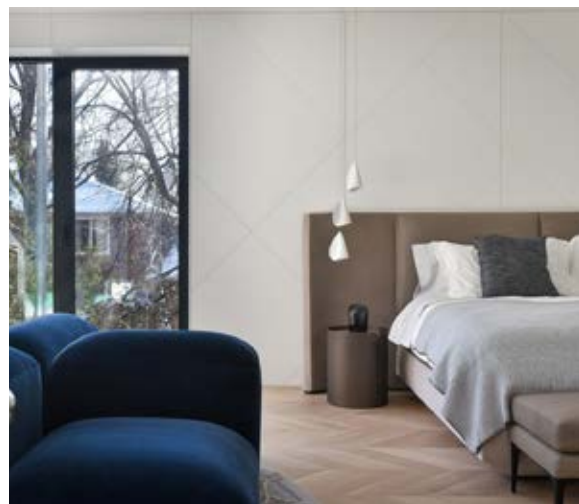
MAVIS by Amuralab.
Contraste Restaurant,
Paris – France.



EXILIS by Amuralab.
BROOKLYN by Stefano Bigi.
RANGE by Marconato & Zappa.
LAPIS by E. Gargano, A. Cristell.
PARERE by E. Gargano, A. Cristell.
COACH by Jean-Marie Massaud.
PANIS BED by E.Gargano, A.Cristell, E.Furin, R.Copeta.
SETACCI by E.Gargano, A.Cristell, E.Furin, R.Copeta.

Private residence, Toronto – Canada.

DAVIS by Amuralab.
Private residence, St.Pietroburgo – Russia.

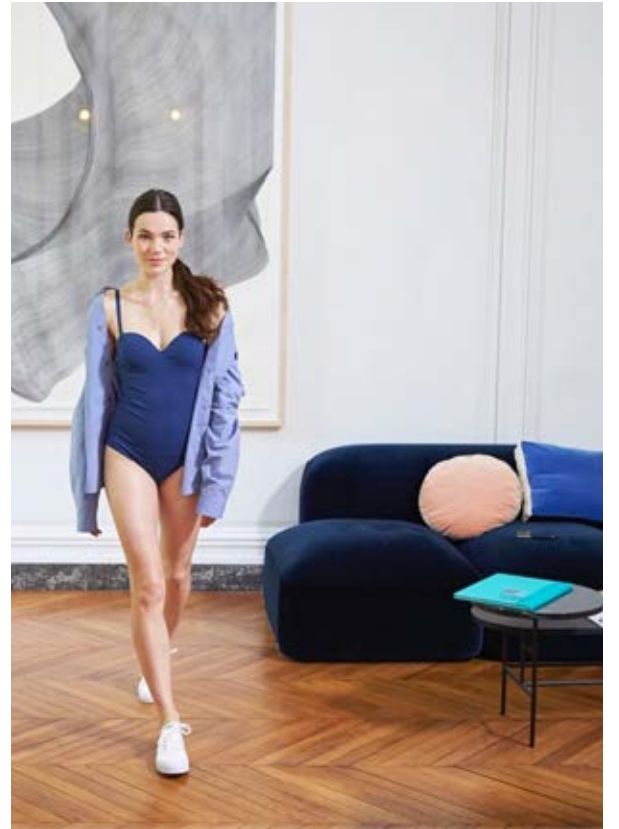




LAPIS by Emanuel Gargano.
Shooting for Milk Magazine.



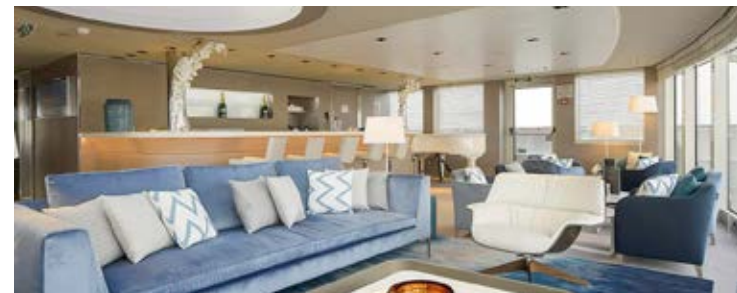
LAPIS by Emanuel Gargano.
Shooting for Reard Paris.



COACH by Jean-Marie Massaud
Private residence, Seoul - South Korea.



COACH by Jean-Marie Massaud.
Compagnie du Ponant, Le Lyrial.





N.E.W.S. SRL

SS 96 KM 96+800 70025 Grumo Appula(BA)

t +39 080.618.01.21

f +39 080.214.06.86

e info@amuralab.com

www.amuralab.com